



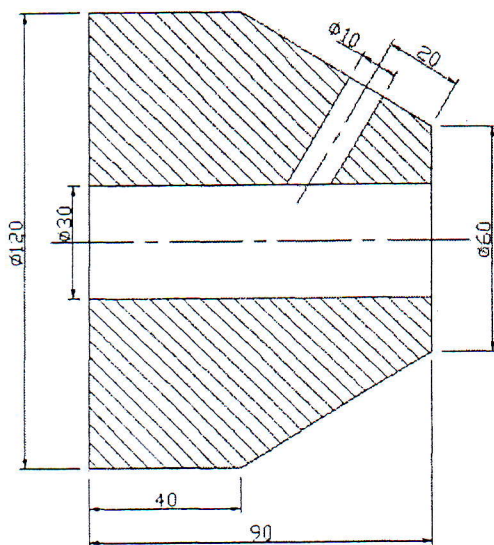
Answer the following questions

Question: 1

- Distinguished between Jigs and fixtures
- What are the welding fixture? State the general purpose of a welding fixture
- Explain briefly the various types of errors accounted for in Jigs and fixtures design.
- Name any three materials commonly used in Jigs and fixtures
- Discuss the advantages of Jigs and fixtures

Question: 2

- Design and sketch a drill Jig to drill the 10 mm hole in the component shown in Fig. 1, assuming that this is the last operation to be performed
- Discuss the location and clamping method employed in your in Fig. 1
- Design and draw at least two views of milling fixture for making a slot of 8 mm wide X 15 mm deep as shown in Fig. 2.
- Mention the different turning fixtures and their applications.
- Figure 3 represents a spherical part, design a suitable Jig and fixture to make a hole of a diameter equals 10 mm as shown in the Fig. 3.



All Dimensions are in mm
Figure 1

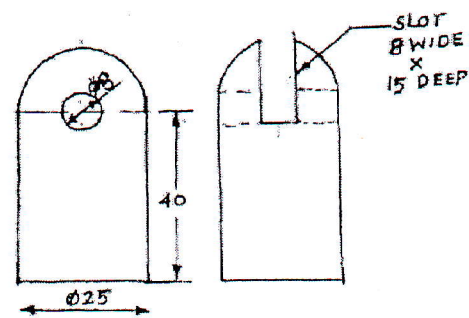


Figure 2

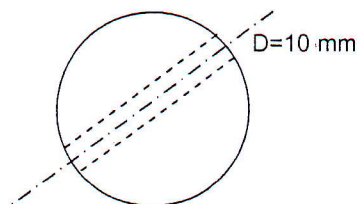


Figure 3