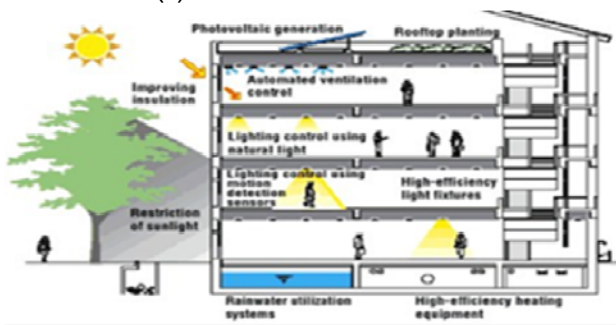


/

-

-



()

()

[]

[w]

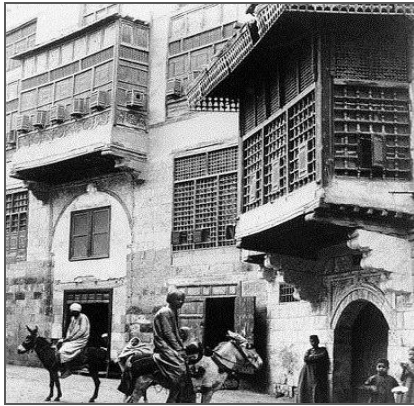
[]

" ...

"

/ /

()
. ()



- ()



- ()



- ()

()

. ()

[]

. ()



- ()



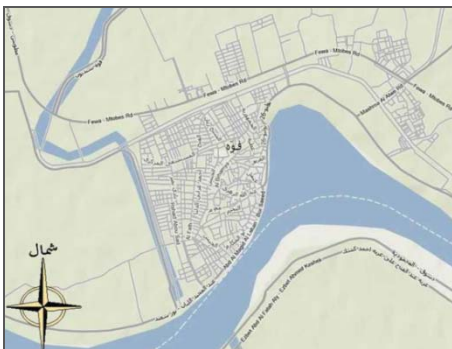
- ()



()



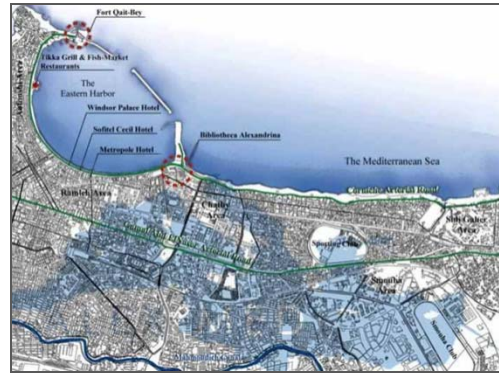
()



()



()



()

() [1]



()

[1]

[1]

[1]

[1]

[1]

()

()

" ...

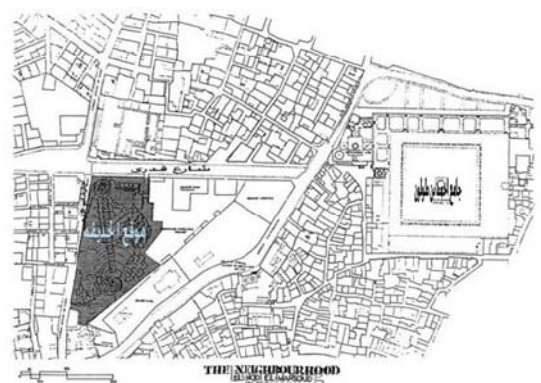
"

.()



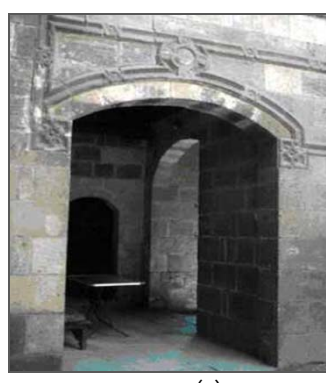
Atfat Al-Ashari

()



THE NEIGHBORHOOD

()



()

()

: •

: •

[]

: •

: •

: •

: •

•

•

•

•

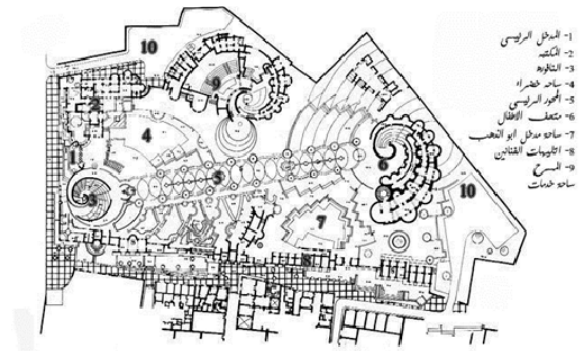
•

[]

[]



()



()



()

٢-٤

-

()

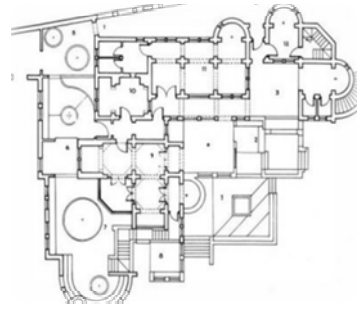
ج - مبنى المكتبة

()



()

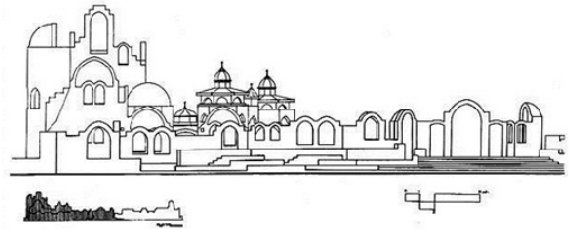
()



()

()

() ()



()

www.benacity.com -١
 www.arab-ency.com, 2/2008 -٢
 www.egytech.com, 7 -2006 -٣
 www.wikipedia.org, 10 -2008 -٤
 www.alhandasa.net, 6/2010 -٥
 www.touregypt.net, 1/2009 -٦
 www.bonah.org,3/2009 -٧

www.flickr.com, 6/20m -٩

Nodes

www.museumsalama.com, 11/2008 -١
 www.mbt3th.us.com, 3/2009 -٢
 www.blogspot.com, 8/2010 -٣
 www.flickr.com, 6/2009 -٤
 www.handasa.net, 12/2007 -٥
 www.jordan-son.com, 3/2007 -٦
 travel.maktoob.com, 2/2008 -٧
 arab-eng-eng.org, 7/2010 -٨
 www.arc-net.com -٩

.1990

REFERENCES

(١) Amin,mk.(1994) "op.cit.p 118.

WEBSITES

[١w] www.eng-artmontadarbi.com

[٢w] www.jorads.com, 6-2009

" ... "

THE EFFECT OF PHYSICAL AND NON-PHYSICAL ENVIRONMENT ON THE ARCHITECTURAL FORMATION THAT FORMS THE CHARACTER MENTIONING LOCAL EXAMPLES

INTRODUCTION

The adaption of the architectural formation language of a building with the environment represents a reflection of those environment facts on that building.

Where the environment is clear and honest in its content and doesn't need to show or confirm what it has through a building or something else, so the adaption of the architectural formation language of a building with the environment doesn't add enough to the environment as the environment itself adds to the formation of the building.

We can divide the environment to its contents include physical and non-physical environment. The physical environment is expressed by a group of elements that include locations, constructional plan, climate, available natural resources and economy.

But the non-physical environment includes: the character, personality, aesthetic and expressional values and (social and cultural) levels. Here it comes the importance of the character among all the contents of the extensive environment and its effect on building designs, where it's related with the place's value and the time requirement for achieving determined formats that reflected negatively or positively on the constructional circumference.

Because of the difference between all of these environments in its practical composition, the architectural art differ to distinguish an area from another. For that reason the environment is studied with its dimensions as an effective dimension on the building planning and design to know the nature of the effect of every variable on the architectural design to reach a design that achieves the highest level of efficiency.

RESEARCH PROBLEM

Since the old ages the human interacts with its environment using its capacity to develop technology to create an environment that architecture suitable to its needs, and are creations normal while built human materials are available in the environment becomes the building part homogeneous with him but with the technological progress appeared misunderstanding of this interaction may think the human that he should demonstrate its ability to conquer nature, using tools and technical potential, were not found error e except after it began the environmental crises in the emerging architecture that did not destroy the environment only, but also destroyed the identity and cultural aspects of place and architectural character of its characteristic.

AIM OF THE RESEARCH

The research aims to clarify the relationship between architecture and the environment and the extent of mutual influence between the environmental architecture and architectural character and the strength of influence and knowledge of whether negative or positive and, through Study the impact of physical environment factors and non-physical factors on the architect to produce a distinctive character.