

## CRUCIAL ROLE OF HISTOPHILUS SOMNI EXOPOLYSACCHARIDE IN BIOFILM FORMATION

Mohamed Elhadidy<sup>1</sup>, Thomas Inzana<sup>2</sup>, and Gamal Younis<sup>1</sup>

<sup>1</sup>Department of Bacteriology, Mycology and Immunology

Faculty of Veterinary Medicine, Mansoura University, Mansoura, Egypt

<sup>2</sup>Center for Molecular Medicine and Infectious Diseases

Virginia-Maryland Regional College of Veterinary Medicine

Virginia Polytechnic Institute and State University, Blacksburg, Virginia 24061

### ABSTRACT

*Histophilus somni* (*Haemophilus somnus*) is an obligate inhabitant of the mucosal surfaces of bovine and sheep and an opportunistic pathogen responsible for respiratory disease, meningoencephalitis, myocarditis, arthritis, and other systemic infections. Although exopolysaccharides (EPS) are a large component of bacterial biofilms, their contribution to biofilm structure and function has been examined for only a few organisms. Here, we undertook a genetic approach to examine the potential role of EPS of *H. somni* 2336 in biofilm formation. We conducted a transposon random gene knockout to study the genetic function of biofilm and EPS. A total of 96 real random transposon mutants were generated of *H. somni* 2336 using the EZ:TN™ <KAN-2>Tnp Transposome™. These mutants were confirmed by colony blot and PCR of kanamycin resistance gene. 25 mutants were confirmed to make less biofilm than the wild type strain (~30-80% decrease) By creation of mutations in the gene encoding for a homolog of filamentous haemagglutinin (FHA), predicted to be involved in attachment in biofilm process. We concluded that this gene might also play a role in EPS production and that EPS might be required for cellular attachment to abiotic surfaces.

### INTRODUCTION

*Histophilus somni* (*Haemophilus somnus*) is a Gram-negative coccobacillus and member of the Pasteurellaceae (Angen et al., 2003). This host specific opportunistic pathogen of cattle is one of the organisms responsible for bovine respiratory disease complex (BRDC), or shipping fever (Corbell et al., 1986). In addition to pneumonia (Miller et al., 1983, Andrews et al., 1985), *H. somni* can cause meningoencephalitis, myocarditis, arthritis,

septicemia, and other systemic infections (Corbell et al., 1986, Inzana and Corbell, 2004). *H. somni* expresses a wide array of virulence factors, including phase variation of lipooligosaccharide epitopes (Inzana et al., 1992, Howard et al., 2000, Inzana et al., 2002), decoration of lipooligosaccharide with sialic acid and phosphorylcholine (Howard et al., 2000, Inzana et al., 2002, Siddaramppa and Inzana, 2004), expression of high-molecular-weight immunoglobulin-binding

proteins (Corbell et al., 1985, Widders et al., 1989 Corbell et al., 1997, Sanders et al., 2003), intracellular survival in professional phagocytes (Czuprynski and Hamilton, 1985, Lederer et al., 1987), inhibition of the oxidative burst of phagocytic cells (Howard et al., 2004), cell adherence (Corbell et al., 1986), serum resistance (Corbell et al., 1985) and induction of apoptosis to endothelial cells (Sylte et al., 2005).

Biofilms are sessile communities of bacterial cells enclosed in a self-produced extracellular polysaccharide matrix and adherent to a biotic or abiotic surface. Biofilms play an important role in immune evasion and tolerance toward antimicrobial agents, leading to persistent and chronic infections (Costerton et al., 1999, Hall-Stoodley et al., 2004).

A capsule has not been identified on the surface of *H. somni*. However, the production of an exopolysaccharide was described (Inzana and Corbell 2004) which is a common component of bacterial biofilms. The functions of EPS in biofilm formation are not yet clear, but it appears to promote surface attachment and provide structural support (Davies et al. 1993). It may also afford protection from external threats, such as antimicrobial compounds and predatory organisms (Stewart 2002), or help secreting strains to grow toward nutrient-rich locations (Foster and Xavier 2007).

## MATERIALS AND METHODS

### Bacteria and culture conditions :

*H. somni* strain 2336 (a pathogenic, pneumonia isolate) was used to study the role of EPS in biofilm formation. *H. somni* strain

2336 was selected for this study because the genome of this strain has been sequenced ([http://microgen.ouhsc.edu/h\\_somnus/h\\_somnus\\_home.htm](http://microgen.ouhsc.edu/h_somnus/h_somnus_home.htm)), and because this strain is the most mature biofilm forming strain (Sandal et al., 2007). *H. somni* was propagated from -80°C skim milk stocks onto Columbia agar containing 5% sheep blood (CBA). For planktonic growth in broth medium, colonies from 24-h cultures were inoculated into brain heart infusion broth supplemented with 0.1% Trizma base (Sigma, St. Louis, MO) and 0.01% thiamine monophosphate (Sigma, St. Louis, MO) (Asmussen and Baugh, 1981), and shaken at 200 rpm at 37°C to late-log phase (5-10<sup>9</sup> colony forming units (CFU)/ml), determined spectrophotometrically. For topo cloning of the Inverse PCR products, *Escherichia coli* DH5™-T1R Competent cells (Invitrogen, Carlsbad, CA) were used as commercially chemically competent cells. Cells were grown on LB agar plates supplemented with 50 µg/ml kanamycin.

### Scanning electron microscopy :

The lower portion of the flow cell containing the coverslip was washed with PBS three times and fixed using 2.5% glutaraldehyde in PBS for 60 min. The cover slips were then rinsed twice for 10 min each in PBS and processed for scanning electron microscopy (SEM) by using a graded acetone dehydration series, followed by the addition of osmium tetroxide (Hong et al., 2007). The samples were subjected to critical drying, mounted onto stubs, and coated with palladium. The specimens were viewed on a Phillips SEM-515 scanning electron microscope, and images were obtained at various levels of magnification.

**Transposon mutagenesis :**

Transposon mutants were generated with EZ::TN™. <KAN-2>Tnp Transposome™ (Epicentre, Madison, WI). Preparation of electro-competent cells was performed as described by Wu et al., (2000). The bacteria were chilled on ice for 30 min and harvested by centrifugation at 5000  $\times$ g for 5 min. The cells were washed twice with 272 mM sucrose, and sedimented after each wash by centrifugation at 5000  $\times$ g for 10 min. The bacteria were suspended in 272 mM sucrose to 1% of the original volume, and aliquots of 39  $\mu$ l were used for electroporation after the addition of one  $\mu$ l of transposome. Electroporation was performed as described (Sandal et al., 2008).

**DNA manipulations, sequencing and sequence analysis**

All DNA manipulations, including plasmid purifications, restriction digestions, ligations and gel electrophoresis were performed according to the established protocols (Sambrook et al., 1989). All genomic DNA purifications, PCR amplifications were performed as described by (Sandal et al., 2008). The sequence flanking transposon mutants were determined by inverse PCR as described by (Martin and Mohn, 1999). It was important to use frequent cutting restriction enzymes, because smaller fragment are more easily amplified in subsequent PCR reactions. The restriction enzyme PstI (New England Biolabs, Ipswich, MA) that cut the transposome once, but have frequent restriction sites at H.somni 2336 genome was chosen to completely digest genomic DNA. The kanamycin resistance primers and the primers used to amplify both Transposome flanking sequences are included in table 1. PCR products were purified using

the PCR purification kit (Qiagen, Valencia, CA) and topocloned using Topo TA cloning kit (Invitrogen, Carlsbad, CA). Sequencing was performed at core laboratory facilities at the Virginia Bioinformatics Institute (VBI), Virginia Tech using universal primers M13 (Invitrogen, Carlsbad, CA) and transposome primers. Flanking sequences of insertion sites were analyzed by comparison to public translated DNA sequence database using BLAST software (Altschul et al., 1997).

**EPS purification :**

The bacteria were also grown in filled, 1-L bottles containing Terrific broth supplemented with Trizma base and thiamine monophosphate with shaking at 75 rpm at 37°C for 4-5 days. The clear supernatant was carefully removed and the cells and biofilm that settled to the bottom of the flask were extracted with hot, 45% aqueous phenol, digested with DNase, RNase, and Proteinase K, and subjected to ultracentrifugation at 125,000  $\times$  g at 4°C, as described for purification of H. somni lipooligosaccharide (LOS) (Inzana et al., 1988). The supernatant from the ultracentrifugation step was precipitated by the addition of 30 mM sodium acetate (final) and 5 volumes of 95% ethanol after incubation at -20°C for at least 4 hours. The pellet obtained by centrifugation was suspended in distilled water and eluted through a sephacryl S-400 column (2.5 x 50 cm) with distilled water as eluent. The first fractions containing carbohydrate (determined by phenol-sulfuric acid assay) were pooled and lyophilized.

**Polyacrylamide gel electrophoresis and alcian blue silver staining**

Polyacrylamide gel electrophoresis (PAGE)

for polysaccharides followed by alcian blue and silver staining was done as described by (Pelkonen et al., 1988) and (Min and Cowman, 1986), respectively.

## RESULTS

### Isolation of mutants defective in biofilm formation

A total of 96 real random transposon mutants were generated of *H.somni* 2336 using the EZ::TN™ <KAN-2>Tnp Transposome™. These mutants were confirmed by colony blot and PCR of kanamycin resistance gene. By PCR, an approximately 900 bp product could be amplified from all the mutants. The results indicated the kan resistant gene was integrated into the bacterial genome (Fig. 1). Of the 96 mutants screened, 31 mutants unable to form such a biofilm were isolated. Scanning electron microscope (SEM) was used to confirm the alteration in biofilm formation in these mutants. By SEM, 25 mutants were confirmed to make less biofilm than the wild type strain (~30-80% decrease) as shown in Fig.2.

### Some biofilm mutants are defective in EPS production

A preliminary Alcian Blue silver stain was performed with the exopolysaccharide extracted from mutants that diminish biofilm formation to determine the correlation between biofilm formation and EPS production. Of interest that 3 of these biofilm deficient mutants were making very faint material in contrast with *H.somni* 2336 wild type that was observed on the gel as typical high molecular weight polysaccharides (Fig. 3). To confirm these results, ELISA was conducted to test the purified EPS from the mutants and the

wild type using polyclonal antirabbit serum. Absorbance of mutant strains was much less than wild type 2336. This might explain some of the contribution of EPS to biofilm structure and function as well as cellular attachment to surfaces. Of interest also, that the total EPS amount of these mutants was much less than the wild type (~ 4-6 mg for mutants and ~14 mg for the wild type).

### IPCR followed by topo cloning and sequencing allowed transposome insertion site determination.

We analyzed the DNA sequence flanking the transposon inserts of these three mutants that are both biofilm and EPS defective. IPCR of the 3 mutants that are both biofilm and EPS defective revealed amplification of ~1.3 kb of the flanking region. Topocloning of the inverse PCR products and sequencing of the plasmid containing the PCR product verified a mutation in the gene encoding for a homolog of filamentous haemagglutinin (FHA), predicted to be involved in attachment (Locus Tag HSM\_1090) which play a role in *Bordetella pertussis* as the attachment bacteria to cells of the respiratory epithelium in whooping-cough infections (Nicholson et al., 2009) as indicated by the BLAST software analysis.

## DISCUSSION

EPS is one of the main constituents of the biofilm matrix (Watnick and Kolter, 2000). The exopolysaccharides (EPS) synthesized by microbial cells vary greatly in their composition and hence in their chemical and physical properties. There is limited information about the bacterial mechanisms involved in the biosynthesis and modification of EPS components. Specifically, we lack knowledge about

how the structure of EPS influences the virulence of animal pathogens. Previous work with *Pseudomonas aeruginosa* and with *Escherichia coli* has shown that EPS (alginate and colanic acid, respectively) synthesis is induced upon attachment of the bacteria to a surface (Davies et al., 1993, Davies and Geesey, 1995, Prigent-Combaret et al., 1999). Although the association of exopolysaccharide (EPS) with attached bacteria has been demonstrated by both electron microscopy (Geesey et al., 1977) and light microscopy (Allison and Sutherland., 1984), there is little direct evidence to suggest that EPS participates in the initial stages of adhesion, despite its synthesis by many species in the adherent population. It is clear from a number of studies that mutants unable to synthesize the EPS are unable to form biofilms (Allison and Sutherland, 1987, Watnick and Kolter, 1999).

*H. somni* EPS production appeared to be upregulated during stress-like conditions that favours biofilm formation. Furthermore, maximum amounts of EPS were obtained under growth conditions in broth that stimulated biofilm formation. *H. somni* produces an excellent biofilm under most growth conditions other than rapid shaking and high aeration (Sandal et al., 2007). Therefore, it is highly likely that this EPS is a component of the biofilm matrix. We were interested to role played by *H. somni* 2336 EPS in biofilm formation.

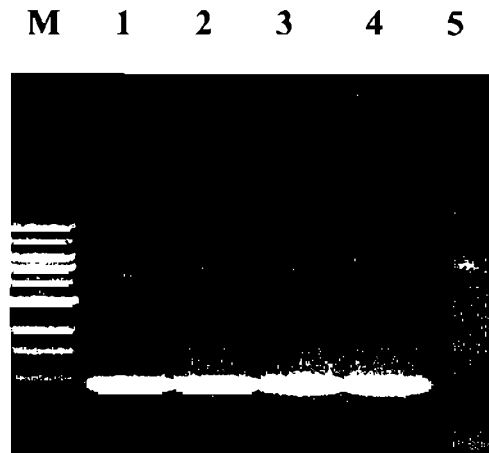
In this study, the role of EPS in biofilm formation of *H. somni* 2336 was investigated by creating random transposon knockouts using the EZ::TN™ <KAN-2>Tnp Transposome™.

The mutants were then screened phenotypically for mutants that are biofilm deficient using the crystal violet assay and SEM. We screened these biofilm deficient mutants for mutants that are deficient in EPS by loading the purified EPS from these mutants and the parent strain as well onto 25% polyacrylamide gels, followed by electrophoresis and staining with Alcian blue and silver stain. Our results showed 3 mutants that are biofilm and EPS deficient. Sequence and BLAST analysis revealed that these mutants have a mutation in the gene encoding for a homolog of filamentous haemagglutinin (FHA) (Locus Tag HSM-1090).

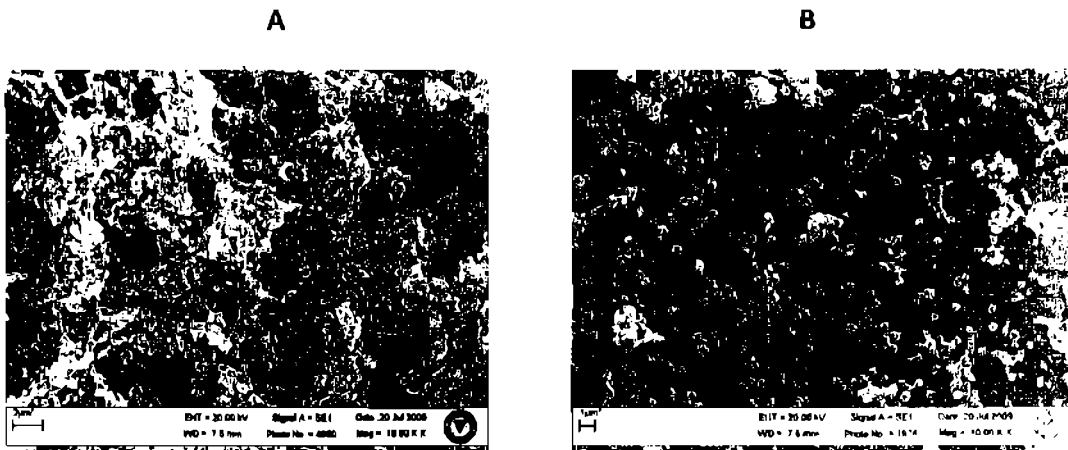
The filamentous hemagglutinin (FHA) which is a fimbrial-like structure on the bacterial surface, and cell-bound pertussis toxin (PTx) is one of two hemagglutinins produced by phase I strains of *Bordetella pertussis*. It is an adhesin that binds the bacteria to cells of the respiratory epithelium in whooping-cough infections. It also plays critical roles in the adhesion process and is necessary for colonization *Bordetella bronchiseptica* to the swine respiratory tract (Nicholson et al., 2009). Earlier studies reported the isolation and characterization of mutants of *Pseudomonas aeruginosa* PA14 defective in the initiation of biofilm formation that are designated surface attachment defective (*sad*). These mutants were defective in biogenesis of the polar-localized type IV pili. Competition studies between wild-type *V. cholera* and pilus mutants show that these structures provide a great advantage in surface colonization. Finally, exopolysaccharide production is necessary to stabilize the pillars of the biofilm (Watnick and Kolter, 1999).

**Table 1** : PCR primers used in this study.

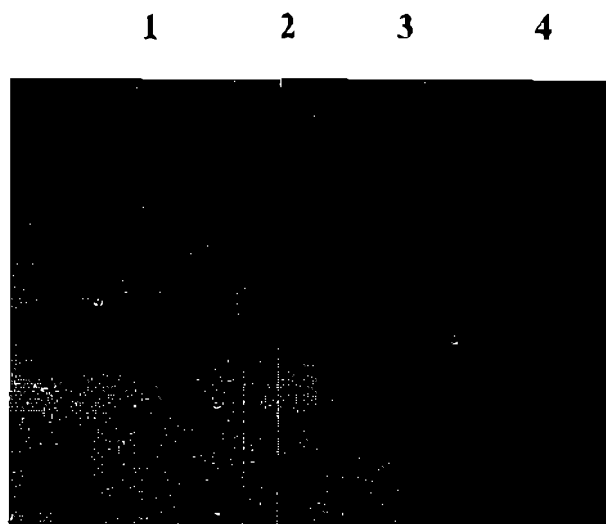
<b>Name</b>	<b>Primer sequence</b>
<b>KAN-2 FP-1</b>	5' - ACCTACAACAAAGCTCTCATCAACC - 3' Forward primer used for DNA sequencing
<b>KAN-2 FP-1</b>	5' - GCAATGTAACATCAGAGATTTTGAG - 3' Reverse primer used for DNA sequencing
<b>Kan_CHK_F</b>	5'- AAGTTGGGTAACGCCAGGGTTTTCC -3' Forward PCR primer for kanamycin resistant gene amplification
<b>Kan_CHK_R</b>	5'- AAGTTGGGTAACGCCAGGGTTTTCC -3' Forward PCR primer for kanamycin resistant gene amplification
<b>M13 F</b>	5'-GTAAAACGACGGCCAG-3' Forward primer used for DNA sequencing
<b>M13 R</b>	5'-CAGGAAACAGCTATGAC-3' Reverse primer used for DNA sequencing



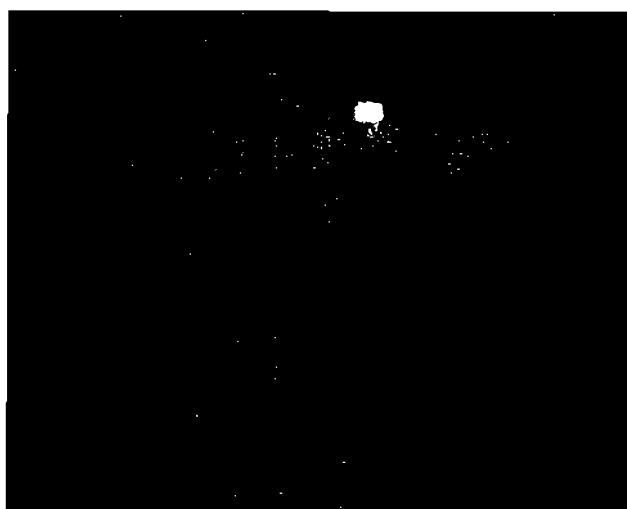
**Fig. 1 : Mutant confirmation by PCR.** The kanamycin resistance gene could be amplified from all mutants (lanes 1-4, ~0.9 kb). No amplification in the *H.somni* 2336 wild type (lane 5).



**Fig. 2 : Scanning electron microscope showing the architecture of the biofilm mass of biofilm deficient mutant versus the wild type *H.somni* 2336.** A is showing the aggregated cells in the biofilm of the parent strain with magnification 10000 X. B is showing the significant decrease in the aggregated cells of the biofilm deficient mutant



**Fig. 3 :** Preliminary Alcian Blue silver stain of purified EPS Purified EPS from transposon mutants waere loaded onto 25% polyacrylamide gels, followed by electrophoresis and staining with Alcian blue and silver stain. Lanes: 1 to 3, 30 µg of purified EPS from EPS defieient mutants.Lane:4 purified EPS from wild type *H.somni* 2336 showing high molecular weight material that is typical of bacterial capsules.



**Fig. 4. :** EPS extraction from by *H.somni* 2336 biofilm after 5 days of growth in supplemented Terrific broth. Bacteria were grown as planktonic cells in a starter culture of 50 ml and then transferred to 1 L of filtered Terrific broth supplemented with TMP, Trizma base, and glueose in a 1 L bottle. Maximum amounts of EPS could be isolated from this biofilm after at least 5 days growth



**REFERENCES**

- Allison, D. G. and Sutherland, I. W. (1987)** : Role of exopolysaccharides in adhesion of freshwater bacteria. *J. Gen. Microbiol.* 133, 1319-1327.
- Allison, D. G. and Sutherland, W. (1984)** : A staining technique for attached bacteria and its correlation to extracellular carbohydrate production. *J. of Microbiol. Methods* 2, 93-99.
- Altschul, S. F.; Madden, T. L.; Schaffer, A. A.; Zhang, Z.; Miller, W. and Lipman D. J. (1997)** : Gapped BLAST and PSI-BLAST: a new generation of protein database search programs. *Nucleic Acids Res.* 25(17), 3389-3402.
- Andrews, J. J.; Anderson, T. D.; Silfe, L. N. and Stevenson, G. W. (1985)** : Microscopic lesions associated with the isolation of *Haemophilus somnus* from pneumonic bovine lungs. *Vet. Pathol.* 22(2), 131-136.
- Angen, O.; Ahrens, P.; Kuhnert, P.; Christensen, H. and Muttters, R. (2003)** : Proposal of *Histophilus somni* gen. nov., sp. nov. for the three species incertae sedis 'Haemophilus somnus', 'Haemophilus agni' and 'Histophilus ovis'. *Int. J. Syst. Evol. Microbiol.* 53(Pt 5), 1449-1456.
- Asmussen, M. D. and Baugh, C. L. (1981)** : Thiamine pyrophosphate (cocarboxylase) as a growth factor for *Haemophilus somnus*. *J. Clin. Microbiol.* 14(2), 178-183.
- Corbell, L. B.; Bastida-Corcueru, F. D. and Beveridge, T. J. (1997)** : *Haemophilus somnus* immunoglobulin binding proteins and surface fibrils. *Infect. Immun.* 65(10), 4250-4257.
- Corbell, L. B.; Blau, K.; Pflaur, D. J. and Ward, A. C. (1985)** : Serum susceptibility of *Haemophilus somnus* from bovine clinical cases and carriers. *J. Clin. Microbiol.* 22(2), 192-198.
- Corbell, L. B.; Gogolewski, R. P.; Stephens, L. R. and Inzana, T. J. (1996)** : *Haemophilus somnus*: antigen analysis and immune responses. Pages pp. 63-73 in *Haemophilus, Actinobacillus, and Pasteurella*. W. Donachie, F.A. Lainson, and J.C.H. (ed.), New York, London : Plenum Press.
- Corbell, L. B.; Widders, P. R.; Gogolewski, R.; Arthur, J.; Inzana, T. J. and Ward, A. C. (1986)** : *Haemophilus somnus*: Bovine Reproductive and Respiratory Disease. *Can. Vet. J.* 27(2), 90-93.
- Costerton, J. W.; Stewart, P. S. and Greenberg, E. P. (1999)** : Bacterial biofilms: a common cause of persistent infections. *Science* 284 (5418), 1318-1322.
- Czuprynski, C. J. and Hamilton, H. L. (1985)** : Bovine neutrophils ingest but do not kill *Haemophilus somnus* in vitro. *Infect. Immun.* 50(2), 431-436.
- Davies, D. G.; Chakrabarty, A. M. and Geesey, G. G. (1993)** : Exopolysaccharide production in biofilms: substratum activation of alginate gene expression by *Pseudomonas aeruginosa*. *Appl. Environ. Microbiol.* 59(4), 1181-1186.

- Davies, D. G. and Geesey, G. G. (1995)** : Regulation of the alginate biosynthesis gene *algC* in *Pseudomonas aeruginosa* during biofilm development in continuous culture. *Appl. Environ. Microbiol.* 61(3), 860-867.
- Foster, K. R. and Xavier, J. B. (2007)** : Cooperation: bridging ecology and sociobiology. *Curr. Biol.* 17(9), R319-321.
- Geesey, G. G.; Richardson, W. T.; Yeomans, H. G.; Irvin, R. T. and Costerton, J. W. (1977)** : Microscope examination of natural sessile bacterial populations from an alpine stream. *Can. J. Microbiol.* 23(12), 1733-1736.
- Hall-Stoodley, L.; Costerton, J. W. and Stoodley, P. (2004)** : Bacterial biofilms: from the natural environment to infectious diseases. *Nat. Rev. Microbiol.* 2(2), 95-108.
- Hong, W.; Mason, K.; Jurcisek, J.; Novotny, L.; Bakaletz, L. O. and Swords, W. E. (2007)** : Phosphorylcholine decreases early inflammation and promotes the establishment of stable biofilm communities of non-typeable *Haemophilus influenzae* strain 86-028NP in a chinchilla model of otitis media. *Infect. Immun.* 75(2), 958-965.
- Howard, M. D.; Boone, J. H.; Buechner-Maxwell, V.; Schurig, G. G. and Inzana, T. J. (2004)** : Inhibition of bovine macrophage and polymorphonuclear leukocyte superoxide anion production by *Haemophilus somnus*. *Microb. Pathog.* 37(5), 263-271.
- Howard, M. D.; Cox, A. D.; Welser, J. N.; Schurig, G. G. and Inzana, T. J. (2000)** : Antigenic diversity of *Haemophilus somnus* lipooligosaccharide: phase-variable accessibility of the phosphorylcholine epitope. *J. Clin. Microbiol.* 38(12), 4412-4419.
- Inzana, T. J.; Glindemann, G.; Cox, A. D.; Wakarchuk, W. and Howard, M. D. (2002)** : Incorporation of N-acetylneuraminic acid into *Haemophilus somnus* lipooligosaccharide (LOS) : enhancement of resistance to serum and reduction of LOS antibody binding. *Infect. Immun.* 70(9), 4870-4879.
- Inzana, T. J.; Gogolewski, R. P. and Corbell, L. B. (1992)** : Phenotypic phase variation in *Haemophilus somnus* lipooligosaccharide during bovine pneumonia and after *in vitro* passage. *Infect. Immun.* 60(7), 2943-2951.
- Inzana, T. J.; Iritani, B.; Gogolewski, R. P.; Kania, S. A. and Corbell, L. B. (1988)** : Purification and characterization of lipooligosaccharides from four strains of "*Haemophilus somnus*". *Infect. Immun.* 56(11), 2830-2837.
- Inzana, T. J. and Corbell, L. B. (2004)** : *Haemophilus*. In *Pathogenesis of Bacterial Infections of Animals* (third edition) pp. 243-257. Edited by C.L. In: Gyles, P. J.F., J. G. Songer & C.O.E. Thoen. Ames, IA Blackwell Publishing
- Lederer, J. A.; Brown, J. F. and Czuprynski, C. J. (1987)** : "*Haemophilus somnus*," a facultative intracellular pathogen of bovine mononuclear phagocytes. *Infect. Immun.* 55(2), 381-387.

**Martin, V. J. and Mohn, W. W. (1999)** : An alternative inverse PCR (IPCR) method to amplify DNA sequences flanking Tn5 transposon insertions. *J. Microbiol. Methods* 35(2), 163-166.

**Miller, R. B.; Lela, D. H.; McEntee, K. E.; Hall, C. E. and Shin, S. (1983)** : Haemophilus somnus infection of the reproductive tract of cattle: a review. *J. Am. Vet. Med. Assoc.* 182(12), 1390-1392.

**Miu, H. and Cowman, M. K. (1986)** : Combined alcian blue and silver staining of glycosaminoglycans in polyacrylamide gels: application to electrophoretic analysis of molecular weight distribution. *Anal. Biochem.* 155(2), 275-285.

**Nicholson, T. L.; Brockmeyer, S. L. and Loving, C. L. (2009)** : Contribution of Bordetella bronchiseptica filamentous hemagglutinin and pertactin to respiratory disease in swine. *Infect. Immun.* 77(5), 2136-2146.

**Pelkonen, S.; Hayrinen, J. and Finne, J. (1988)** : Polyacrylamide gel electrophoresis of the capsular polysaccharides of Escherichia coli K1 and other bacteria. *J. Bacteriol.* 170(6), 2646-2653.

**Prigent-Combaret, C.; Vidal, O.; Dorel, C. and Lejeune, P. (1999)** : Abiotic surface sensing and biofilm-dependent regulation of gene expression in Escherichia coli. *J. Bacteriol.* 181(19), 5993-6002.

**Sambrook, J.; Fritish, E. F. and Maniatis, T. (1989)** : Molecular cloning: A laboratory

manual (second edition), Cold Spring Harbor Laboratory press, New York.

**Sandal, I.; Hong, W.; Swords, W. E. and Inzana, T. J. (2007)** : Characterization and comparison of biofilm development by pathogenic and commensal isolates of Histophilus somni. *J. Bacteriol.* 189(22), 8179-8185.

**Sandal, I.; Seleem, M. N.; Elswalfi, S. F.; Sriranganathan, N. and Inzana, T. J. (2008)** : Construction of a high-efficiency shuttle vector for Histophilus somni. *J. Microbiol. Methods* 74(2-3), 106-109.

**Sanders, J. D.; Bastida-Corcucera, F. D.; Arnold, K. F.; Wunderlich, A. C. and Corbell, L. B. (2003)** : Genetic manipulation of immunoglobulin binding proteins of Haemophilus somnus. *Microb. Pathog.* 34(3), 131-139.

**Siddaramppa, S. and Inzana, T. J. (2004)** : Haemophilus somnus virulence factors and resistance to host immunity. *Anim. Health Res. Rev.* 5(1), 79-93.

**Stewart, P. S. (2002)** : Mechanisms of antibiotic resistance in bacterial biofilms. *Int. J. Med. Microbiol.* 292(2), 107-113.

**Sylte, M. J.; Corbell, L. B.; Inzana, T. J. and Czuprynski, C. J. (2001)** : Haemophilus somnus induces apoptosis in bovine endothelial cells in vitro. *Infect. Immun.* 69(3), 1650-1660.

**Watnick, P. and Kolter, R. (2000)** : Biofilm, city of microbes. *J. Bacteriol.* 182(10), 2675-2679.

**Watnick, P. I. and Kolter, R. (1999) :** Steps in the development of a *Vibrio cholerae* El Tor biofilm. *Mol. Microbiol.* 34(3), 586-595.

**Widders, P. R.; Paisley, L. G.; Gogolewski, R. P.; Evermann, J. F.; Smith, J. W. and Corbell, L. B. (1986) :** Experimental abortion and the systemic immune response

to "Haemophilus somnus" in cattle. *Infect. Immun.* 54(2), 555-560.

**Wu, Y.; McQuilston, J. H.; Cox, A.; Pack, T. D. and Inzana, T. J. (2000) :** Molecular cloning and mutagenesis of a DNA locus involved in lipooligosaccharide biosynthesis in *Haemophilus somnus*. *Infect. Immun.* 68(1), 310-319.

## الملخص العربي

## النقاط الدقيقة (قسمى البحث العلمى) واستكشافه فى تعليمات البيوفيلم

د/ محمد الحديدى<sup>١</sup> د/ توماس انزان<sup>٢</sup>  
د/ جمال يونس<sup>١</sup>

<sup>١</sup> قسم البكتريولوجى، ميكولوجى وإيمونولوجى - كلية الطب البيطرى - جامعة المنصورة، المنصورة، مصر

<sup>٢</sup> المركز الطبى للأمراض الوبائية فىرجينا - كلية الطب البيطرى بالميريلاند

جامعة فيرجينيا للدراسات العليا- بلاكسبورج - فيرجينيا

الهيموفلس سومتس (الهستوفلس سومتس) من الميكروبات السالبة الجرام الانتهازية المسنولة عن الأمراض التنفسية المعقدة فى الأبقار أو حمى الشحن، إنتهاب السحايا والدماغ التخثرى، إنتهاب عضلة القلب، إنتهاب المفاصل، الإجهاض، تسمم الدم وغيرها من الأمراض الجهازية، أحد العوامل الهامة لضرارة الهستوفلس سومتس هى تكوين الغشاء الحيوى (البيوفيلم) وإنتاج السكاريد الخارجى (أكسبولى سكاريد).

يكون الهستوفلس سومتس غشاء حيوى بكمية كبيرة سواء داخل الجسم أو فى المختبر وبالتالى يكون تكوين الغشاء الحيوى مهم لاستمرار الهستوفلس سومتس داخل الجسم، ينتج الهستوفلس سومتس أيضاً سكاريد خارجى الذى يسيل من على سطح الخلايا المناعية على النحو الذى حدده المجهر المناعى الإلكتروني المنقلب إلا أن البيانات التى لدينا على تلك عوامل الضرارة تفتقر إلى معلومات عن الوظائف الجينية التى تنظم تكوين السكاريد الخارجى، لذلك فقد تم إنشأ طفرات جينية باستخدام الترانسبوسون EZ::Tn5TM<KAN-2>Tnp Transposome وفرزهم للوصول لطفرات غير مكونة للغشاء الحيوى، تم تحديد ٢٥ طفرة تكون غشاء حيوى أقل كثيراً من السلالة الأم (٠.٠-٧.٠٪ أقل) وهو ما أكده المجهر الإلكتروني الماسح.

تم التعرف على مواقع إدراج الترانسبوسون فى هذه الطفرات التى تكون الغشاء الحيوى بدرجة أقل عن طريق تسلسل الهامض النووى لمنتجات إختبار البلمرة المتسلسل المعكوس وبعض هذه الطفرات يقع الترانسبوسون فى الجين الهيماغلوتين الحيطى (FHA) والذى يتوقع أن يكون مسئولاً عن إلتصاق الغشاء الحيوى.

لوحظ أيضاً أن بعض الطفرات فى الجين (FHA) تنتج قليلاً من السكاريد الخارجى عن السلالة الأم وذلك عن طريق إختبارات الأليزا. صيغة الأليزيان الأزرق الفضى وكذلك عن طريق وزن كمية السكاريد الخارجى، هذه النتائج قد تفسر الدور الذى يلعبه السكاريد الخارجى فى عملية إلتصاق الغشاء الحيوى على السطح، لقد تم استخلاص السكاريد الخارجى من أكبر كمية من الرسوب الخلوية التى نمت فى إنخفاض الأوكسجين لمدة خمسة أيام وعلاوة على ذلك تم إنتاج مقادير الحد الأقصى من السكاريد الخارجى خلال المرحلة الثابتة، فى الظروف اللاهوائية وخلال نمو فى ٢٪ كلوريد الصوديوم وهذه المؤثرات تعتبر مؤثرات إجهاد التى تحفز الغشاء الحيوى، هذا يعنى أن الحد الأقصى للسكاريد الخارجى يمكن الحصول عليه فى ظل الظروف التى حفزت نمو الغشاء الحيوى والتى هى عنصر من نسيج الغشاء الحيوى.