

Tanta University
Faculty of Medicine
Neurosurgery Department
April 2, 2016

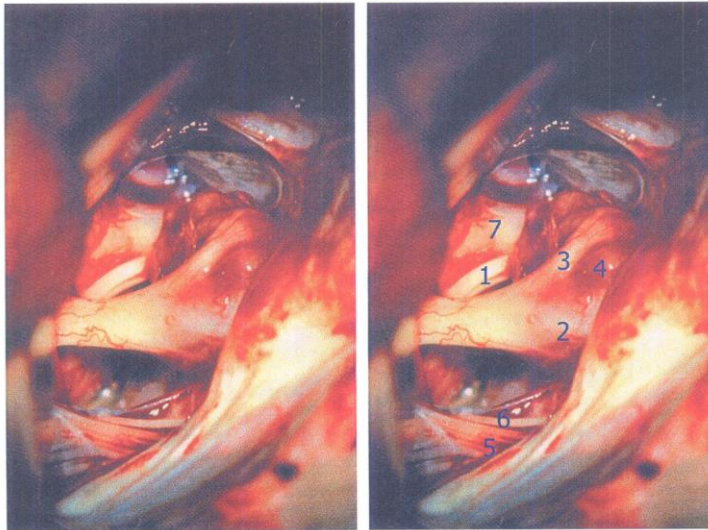
MD Neurosurgery, Anatomy
& Pathology
Number of Questions:
Three questions anatomy
Time Allowed: 3 Hours
Total: 100 Marks



All Questions must be answered:

Microsurgical Anatomy

- Anatomy of the sphenoid sinus (15 Marks)
- Lumbosacral plexus (15 Marks)
- Mention the name of each of the numbered structures in the following figure, and then discuss the surgical anatomy of (1) & (3) (55 Marks)



- Transverse section in the lower medulla (15 Marks)

Tanta University

Faculty of Medicine

Neurosurgery Department

April 19, 2016

MD Neurosurgery, Anatomy
& Pathology

Number of Questions:

Three questions anatomy

Time Allowed: 3 Hours

Total: 100 Marks



All Questions must be answered:

Microsurgical Anatomy

- The superior orbital fissure
- The thalamus

Surgical Neuropathology

- Pathological aspects of brain cell damage
- Pathology of pineal lesions